

presbyterian *profiles*

A PUBLICATION OF FIRST PRESBYTERIAN CHURCH

FEBRUARY 2020



February 26 ASH WEDNESDAY

Staff Contact Info	2
A Message from Linda	2
A Message from Paul	3
Children: Worship Centers	4
Presbyterian Women	5
Save the Date	6
Old Places, New Spaces	7
Outreach Committee Update	8
Community Partner	9
Connect Together	10
FPC Prayer Requests	11
FPC Birthdays	11

CHURCH STAFF

Deacons

deacons@fpcholland.org

Nancy Burkitt

Nursery / Child Care
nursery@fpcholland.org

Sheri Harris

Administrative Assistant
office@fpcholland.org

Karla Kammeraad-Bos

Bookkeeper
bookkeeper@fpcholland.org

Lori Klinesteker

Clerk of Session &
Children's Ministry Leader
children@fpcholland.org

Linda Knieriemen

Pastor
pastor@fpcholland.org

Chuck Norris

Director of Music
music@fpcholland.org

Jane Oosterhouse

Custodian
custodian@fpcholland.org

Thom Samuelson

Maintenance
maintenance@fpcholland.org

Sue Stock

Publications Specialist
publications@fpcholland.org

Paul Van Kempen

Associate Pastor
associatepastor@fpcholland.org



Rev. Linda Knieriemen

Pastor

We Breathe

Catch your breath. Wait with bated breath. Save your breath. Hold your breath. Take a deep breath. Between breaths. See your breath. Under your breath. Out of breath. Rapid breath. Short of breath. Last breath.

Breathe.

In these dark winter, post-Christmas, pre-Lent days, many of us are catching our breath from the holidays, waiting with bated breath for warmer days, and seeing our breath in the crisp morning air. Some will hold their breath anxious about medical reports, or report cards. Some will watch a loved one's last breath.

In Greek it's *pneuma*. Winter is flu and pneumonia season; some of us will be out of breath, lungs congested, living with a pesky, lingering virus.

In Hebrew it's *ruach*. The life-giving, transforming breath of God hovering over the face of the deep bringing forth life.

In Greek, it's *spiritus*. Spiritus Sanctus. Holy Spirit. The One who in-spires.

With every breath taken, held, lost, we are in the Spirit's care and keeping, energy and power, wisdom and courage. And creativity!

2020, like 2012, is a Sabbatical year for me. I am enormously grateful that as a congregation you provide your pastors with 3 months sabbatical every 7 years. This much needed interval follows a season of construction and staff changing per-spuration which ended before my near ex-piration! Mid-April through mid-July will be a time for in-spiration, and re-spuration. I'll be organizing my reading and retreating around what Richard Rohr calls the "second half of life" (see his book *Falling Upward*) and on end-of-life caregiving.

Rev. Van Kempen along with preachers Barb Schreur, Doug Brouwer, and Sheri Harris, will lead worship. Upon return, we shall again con-spire together: the staff team, Session, and the congregation-at-large as we seek to find and to do the will of God at First Presbyterian Church!



Rev. Paul Van Kempen

Associate Pastor

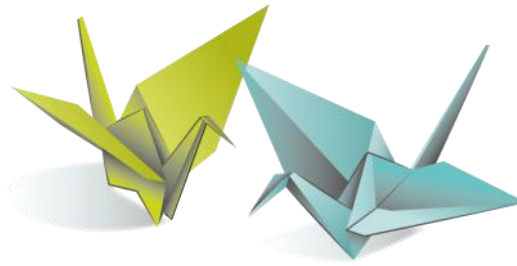
Paper Cranes

Have you ever folded a paper crane?

Paper cranes are a simple craft project. Maybe you learned to fold one in art class or maybe you had an origami book when you were young. (I had an origami book but I also had a paper airplane book—it was like origami I could throw!)

The paper crane, however, isn't just a kid's craft project. In Japan, the crane is a symbol of peace. Paper cranes are often left at places like war memorials or the atomic bomb memorials.

Cranes are also considered to grant happiness or good luck. An ancient Japanese legend promises that anyone who folds 1000 cranes will be granted a wish by the gods. In modern practice, 1000 cranes have become a popular gift for someone who is ill and needs recovery. Family and friends work together to fold the cranes for the ailing individual and deliver them as a gift. The 1000 cranes are a prayer for good health and for peace.



This semester at Youth Group, we are folding paper cranes during our prayer time. As each student shares their prayer requests with the group, we fold origami cranes. After the prayer, the prayer cranes are hung from the ceiling. As the ceiling becomes more and more covered in cranes, we will be

reminded of our prayers for each other and of our desire for peace. Their cranes also add some beauty and whimsy to our space.

If you know how to fold cranes and want to add some prayer cranes to our flock, I would encourage you to fold a crane as you pray—folding your prayer into the origami crane. You can drop prayer cranes off at my office or in my box and I will add them to the cloud of prayers in the youth room.



YOUTH@FIRST
FEBRUARY SCHEDULE

Feb 2	Super Bowl Party
Feb 7-9	Winter Fest Retreat (NO MEETING SUNDAY NIGHT)
Feb 16	Lesson night at church
Feb 23	Sledding at VanRaalte (if there is snow)



Lori Klienesteker

Children's
Ministry Leader

Worship Centers: Keeping in Touch

Recently, we had the privilege of holding a training in our newly renovated Worship Center. Each time I take part in a training or come together with our team of Celebrants. I'm reminded of why I believe so strongly in this method of teaching. I wish to share with you a publication of 6 years ago, hoping to reach out to our families of current worshipers, and to renew the spirit of WC.

Have you ever wondered why Worship Center instead of the typical Sunday School? This is a portion of the philosophy. (Children, Environment and Materials will be covered in a future article.)

Blessed to be worshipping and wondering
with our Children ~ Lori Klienesteker

What's the Difference?

Sunday School Model

Goals: Teaches facts about God and about our beliefs.

Content: The story/lesson has a specific moral lesson.

Children are expected to grasp and reiterate that moral concept.

Teacher: The teacher "tells" the children a story, as well as what they need to know about God.

Teacher is the leader and director of all the children's activities during their time together.

Worship Center Model

Goals: Enables children to encounter and experience God and then to give expression to that encounter.

Content: Stories/lessons are open-ended, allowing children the opportunity to "wonder" – to make the story their own.

Verbalization of conclusions not mandatory.

Teacher: Teacher (Celebrant) is "in" the story with the children. Allows story image to "rest" with children.

Teacher (Celebrant) is facilitator; making space for the work which only God's Holy Spirit can accomplish.

Presbyterian Women



MIRIAM CIRCLE - February 12 at 9:30a

HANNAH CIRCLE - February 13 at 1:30p

Our call to care for God's creation is ever more urgent. One of the worst environmental disasters in recent memory, this season's bushfires in Australia, have touched every state in Australia, burned approximately 12.35 million acres of land, killed dozens of people, destroyed thousands of homes, created a crisis for Australian wildlife (killing millions of animals), and emitted such an extensive smoke cloud that it will circle the earth before it dissipates. The fires are still burning.



What will we do? In the immediate term, we can offer prayers and give to Salvation Army Australia's disaster appeal: (<https://www.salvationarmy.org.au/>).

See Newton Presbytery's prayer for Australia:
<https://newtonpresbytery.org/2020/.../03/australia-is-on-fire/>.

Will we also examine our lifestyles and determine how we are contributing to global warming? Will we reduce our use of fossil fuels and end our use of single-use plastics? Will we ride-share and buy solar generated electricity? Will we lessen our impact and press our lawmakers for decisive and immediate action to prevent further climate change? We pray that it will be so.

GET THE LATEST NEWS FROM PRESBYTERIAN WOMEN

online: PresbyterianWomen.org

Facebook: Presbyterian Women in the PC (USA)

SMALL GROUP LEADERS

CHOIR & MUSICIANS

Chuck Norris
charlesenorris@gmail.com

DINNER & THEATRE GROUP

Chris Urbaniak
cmurbaniak@comcast.net

MEN'S BOOK GROUP

Larry Lynn
oldrun09@gmail.com

MEN'S DISCUSSION GROUP

Dave Ford
davidford56@comcast.net

WOMEN'S BOOK GROUP

Bev Plagenhoef
rbplagen@live.com
616.335.3942

WOMEN - MIRIAM CIRCLE

Bev Plagenhoef
rbplagen@live.com
616.335.3942

WOMEN - HANNAH CIRCLE

Jauanna Jackson
jauannaj@yahoo.com
616.399.5322

YOGA

Gwen Boeve
ghekman@gmail.com
616.502.4642

YOUNG FAMILIES

Cassie Kregger
Cassie.hildebrandt@gmail.com
616.298.4164

SAVE THE DATE



Feb 7-9 > Youth Winter Fest

This year we are planning to go to Big Rapids for Winter Fest. **WooHoo!** We will be spending time with other youth groups, worshipping together, skiing and snowboarding together!



Feb 6 > Bethel Bible Series

Begins Thursday, February 13 at 1:30p and will be led by Judy Faber.



February 14 > Second Friday Night Film Series

Now showing: **Wyeth** (2018; 87 minutes) Documentary of one of America's most popular but least understood, artists. While his exhibitions routinely broke attendance records, art world critics continually assaulted his work. Through unprecedented access to family members, archival materials, and his work, Wyeth presents the most complete portrait of the artist, bearing witness to a legacy just at the moment it is evolving.



Feb 21-23 > Annual Women's Retreat

The annual Women's Retreat at the Geneva Camp and Conference center. Our retreat leader will be Mary McKSchmidt, and our topic will center around Water for Life. All women are invited. Feel free to invite friends from outside our congregation. **Register by Feb. 7 at:** www.fpcholland.org/calendar.



Feb 26 > Ash Wednesday Service

Details to come.



Feb 29 > Dinners for Seven—Leap Year Style

If you are single or a couple sign-up to gather in small groups for dinner on Saturday, February 29. The host provides the main course and those assigned to their home will bring supportive dishes. Sign up at the Welcome Desk and indicate if you can host or if you need childcare. **FPC Spiritual Growth Council will reimburse childcare costs up to \$50 if parents of young children would like to attend this event.** Questions go to Chris Urbaniak.

Old Places, New Spaces



Introducing...

THE MACATAWA CONFERENCE ROOM

Previously:

a Worship Center.

Where:

on the north side of the building just past the Men's Restroom.

Purpose:

meetings of 8-10; four sectional tables for seating; additional table for coffee, snacks.

Equipment:

video screen

Preschool Enrollment



First Presbyterian Preschool

It's hard to believe it, but First Presbyterian Preschool is already planning for our 2020/2021 school year! Open enrollment begins at our Open House, Saturday, Feb 1 from 9:30-11:30. We would love to see you there! As church members, you are also invited to enroll early. Applications can be found on the Welcome Table or online. If you have any questions or would like to schedule a tour, please contact Amanda Marsman at membership.fppreschool@gmail.com.

NOTE: Active FPC members with preschool age children are eligible for tuition scholarships of \$400 per year for the 4 year old class or \$300 per year for the 3 year old class to help defray the cost of attendance at FPC preschool. Talk to one of your Spiritual Growth Council elders (Lauren Stouffer, Cassie Kregger, or Andrew McMaster) for more information,



Mission and Outreach Council News

This article is a summary of a recent Midtime Ministry presentation. Consensus at the class was we should share the information with the entire congregation.

The council has a \$2,000 Housing budget. In 2019, \$1,000 went to the Resilience Housing Program and \$1,000 went to Lakeshore Habitat for Humanity.

The council has a \$3,000 preschool budget for scholarships.

Our Emerging Needs budget, \$11,500, is available for unexpected or one year expenditures. Examples are: supporting refugee families, supporting Peace Camp, youth and adult mission trips, special events and disaster relief. The funds that remain at the end of the year are traditionally distributed to our partner agencies as an end of the year bonus.

The pastors have a Neighborhood Assistance budget of \$1,500 to assist congregants and community members in fiscal difficulties.

The Council also promotes local events such as the Crop Walk, Empty the Pallet, coat, blanket and hat and mitten collection and special offerings.

\$25,000 was distributed to the Presbyterian Church (USA) for mission work.

- 61% goes to the Presbytery
- 38% goes to the General Assembly
- 1% goes to the Synod

First Presbyterian Church is fortunate that its members support local and international mission and outreach programs with a total budget of \$63,000 per year.

The Partner Agencies we support, the distributions of funds in 2019, and the liaison for each agency follow:

Escape Ministries	\$2,400	David Ford
Resilience (formerly Center for Women in Transition)	\$2,366	Sherry Martens
Good Samaritan Ministries	\$2,311	Pynnonens
ACTS	\$2,300	Scott Siakel
Community Action House	\$2,200	Dan Williams
Kids food Basket	\$2,144	Pynnonens
Children's Advocacy Center	\$2,088	Janet Hostetler
Holland Free Health Clinic	\$1,855	Marilyn Lynn
70 x 7 Life Recovery	\$1,344	Laura McCranner
Out on the Lakeshore	\$992	Tom Urbaniak

Note: Council distributed \$500 out of Emerging Needs to bring the total to \$1492 during Pride festival)

TOTAL \$20,000

These funds are distributed using a spreadsheet where each member of our Council decides an amount, not to exceed \$6,000 to each of the ten agencies. The totals are then averaged resulting in the above totals, a very fair process.



Photos courtesy of goodsamministries.com

Community Partner

70x7 Life Recovery

70x7 Life Recovery serves men and women being released from incarceration and the families of those incarcerated.

Those being released face significant obstacles. The obvious ones are legal restrictions, employment, housing, and rebuilding the family. The not so obvious ones are caused by years of incarceration where there is no decision-making opportunity and living in a prison culture of survival with everyone out for themselves. Those getting out are overwhelmed by a world that has changed, a world where hundreds of decisions need to be made every day, and the lack of tools to begin a new life. 70x7 meets and guides them toward a godly and productive new life with a program that includes:

- Classroom instruction in life skills and job readiness skills
- Supervised volunteer work where work habits are coached
- Job placement through our own employment agency with one of our partnering employers
- A mentor to continually guide and lead them in their new walk. The results are restored lives, reconciled families, and a recidivism rate of just 3.93% compared to a national rate of about 50%.

The needs of the families of those presently incarcerated include a sense of isolation, shame, and anger as well as practical issues such as finances, childcare, and how to navigate the corrections system. We bring these families together twice a month to provide knowledge, support, hope, and access to needed resources.

Thank you

Have you helped at a church event by offering to launder the linens? With the completion of our update to the church, it is important for those towels and tablecloths to be returned.

Thank you!



Annual Women's Retreat

The annual **Women's Retreat** will be held **February 21- 23** at the Geneva Camp and Conference center. We are excited to announce our retreat leader this year will be Mary McKSchmidt, and our topic will center around Water for Life. All women are invited. Feel free to invite friends from outside our congregation. Registration deadline is February 7. Informational brochures with registration form are available in the Narthex. You can also register online by visiting our website:
www.fpcholland.org/calendar.



CONNECT TOGETHER

Below are a handful of Adult Enrichment Opportunities at FPC.

MEN'S BOOK GROUP

Meets 1st Monday of each month @ 7p in M&M Café

Contact: Larry Lynn oldrun09@gmail.com

Meets February 3 / February Book: *Troublesome Young Men* by Lynne Olson.

MEN'S DISCUSSION GROUP

Meets every other Friday @ 7:30a in the M&M Café

Meets **February 7 and 21.**

Each month a different subject is discussed.

Contact: David Ford davidford56@comcast.net

WOMEN'S BOOK CLUB

Meets 2nd Sunday of each month @ 2p in the M&M Café

Bev Plagenhoef rvplagen@live.com 616.335.3942

Meets February 9 / January Book: *I, Eliza Hamilton* by Susan Halloway Scott

WOMEN — MIRIAM CIRCLE

Meets 2nd Wednesday of each month @ 9:30a in the Michigan room

Bev Plagenhoef rvplagen@live.com 616.335.3942

Meets Wednesday, February 12 at 9:30a

WOMEN — HANNAH CIRCLE

Meets 2nd Thursday of each month @ 1:30p in the Michigan room

Contact: Peggy Purdy pfpreads1480@gmail.com
201.910.4555

Meets Thursday, February 13 at 1:30p

ADULT MID-TIME

Meets Sunday at 9:45a in the Michigan Room.

ADULT CHOIR

Chuck Norris (director) charlesenorris@gmail.com

Meets every Wednesday @ 7p in the sanctuary.

YOGA

Gwen Boeve ghekman@gmail.com 616.502.4642

Meets every Tuesday @ 9a - location TBD

Session runs for 16 weeks, starting the second week of January. New students always welcome!

YOUNG FAMILIES

Cassie Kregger cassie.hildebrandt@gmail.com,
616.298.4164

3rd Saturday at various times/places - notified by email

DINNER & THEATRE GROUP

Chris Urbaniak cmurbaniak@comcast.net 616.836.9293

October, February, April

DINNERS FOR 7

Chris Urbaniak cmurbaniak@comcast.net 616.836.9293
November, March

Go to FPC website to be placed on notification email list.

2nd FRIDAY NIGHT FILM SERIES

Led by Jack Hyde.

The series runs the 2nd Friday of each month, January – May. Join us at 7:30p in the Michigan Room.



*worshipping, serving, and living with a fresh
vision of God's vibrant energy and grace for all..*