



# presbyterian *profiles*

A PUBLICATION OF FIRST PRESBYTERIAN CHURCH / DECEMBER 2022

A Message from Rev. Linda Male	2
A Message from Rev. Paul Van Kempen	3
Worship Center	4
Presbyterian Women	5
Connect Together	6
FPC Prays	7

## CHURCH STAFF

### Deacons

deacons@fpcholland.org

### Hannah Campau

Administrative Assistant  
office@fpcholland.org

### Marlene Field

Bookkeeper  
bookkeeper@fpcholland.org

### Lori Klinesteker

Clerk of Session &  
Children's Ministry Leader  
lori@fpcholland.org

### Linda Male

Interim Pastor and Head of Staff  
linda@fpcholland.org

### Chuck Norris

Director of Music  
charles@fpcholland.org

### Jane Oosterhouse

Custodian  
jane@fpcholland.org

### Thom Samuelson

Maintenance  
thom@fpcholland.org

### Sue Stock

Publications Specialist  
sue@fpcholland.org

### Paul Van Kempen

Associate Pastor  
paul@fpcholland.org



Rev. Linda Male

Interim Pastor

## Linda's Keyboard

I am one of those “non-pledge” church members. I make it hard for those who plan the budget for the church each year because they can never count on what I might give for the ministry of a congregation. I have some legitimate reasons for not signing pledge cards, but I have begun to believe that I need to stop this habit. Even though my church might assume I will give at the same level I have been giving for years, it would make life easier for the treasurer, the session, and the stewardship committee to function confidently knowing that I at least *intend* to give consistently.

If there are only two or three of us “non-pledgers,” it’s not so hard to accept, but if enough of us don’t volunteer a range for our giving, we are actually hampering the goals and hopes for the congregation. This year I will change.

Instead of thinking of signing a card that locks me in to a certain amount per year, I will take the pledge card and make an estimated range of what seems reasonable in my situation. I will change the title of the card to “Estimate of Giving” and sign my name with the intention of giving in the range I put on the card. I know this is not perfect, but at least those who have the task to approve a budget for the coming year will know that I will give not only time and energy to the church’s ministry but also will support others in the ministry with my income.

When I am called to be an Interim Pastor, I always give to the congregation I serve. My husband then gives to the congregation where he is a member whether he attends his church or mine. He considers himself responsible to his church.

My plea in writing about my personal responsibility is the hope that I can move more of us who love FPC to at least indicate our financial support in some specific way. If a signed card is more than you care to do, please at least call or send an email to our bookkeeper to say, “Yes, I plan to give monetarily in this range for 2023 to the ministry at FPC” (Our bookkeeper: [marlene@fpcholland.org](mailto:marlene@fpcholland.org)).

A pledge was never intended to lock anyone in to a demanded amount. We simply want to be fiscally responsible to the wide variety of ministries we support within the congregation, in our community, and in the world. FPC is blessed by faithful giving over the years. As we look forward to 2023, may we freely bless others as we have received much from God’s hands.

Grace and peace, Linda





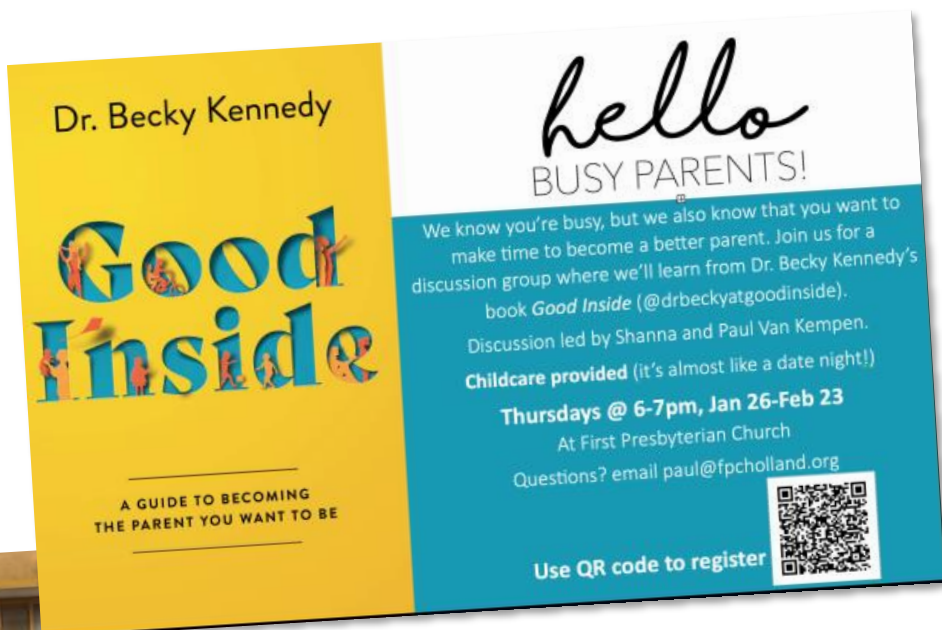
Rev. Paul Van Kempen  
Associate Pastor

## Busy but Better

Hello Busy Parents! We know you're busy, but we also know that you want to make time to become a better parent! Join us for a discussion group where we'll learn from Dr. Becky Kennedy's book, *Good Inside* (@drbeckyatgoodinside).

Discussion led by Shanna and Paul Van Kempen. **Childcare provided** (it's almost like a date night!) **Thursdays from 6-7pm, Jan 26-Feb 23** at First Presbyterian Church.

Questions? Email [paul@fpcholland.org](mailto:paul@fpcholland.org)



Christmas Eve Pageant featuring children of all ages. Photos courtesy of Lauren Stouffer.





Lori Klinesteker  
Children's  
Ministry Leader

## Worship Center: Keeping In Touch

Worship Center participants gathered during Celebration Time to create handmade ornaments to gift to their loved ones. Following this time altogether, the Christmas story was shared with joy in their own Worship Center. Ask the WC children about a gift they received that reveal...*Following Christ's Light in all they do.*

Intergenerational Jesse Tree ornament decorating was a big hit. We learned about the Jesse Tree then hung the first ornament on the nature tree in front of FPC. Watch for more opportunities to be part of the whole congregation coming together.

The Worship Center was quiet over the holidays, we are looking forward to being with the kids and hearing about their special Christmas memories. upon return January 8.

*Come share the Light of Christ with us.*

Lori Klinesteker



Photos courtesy of Lauren Stouffer.





## Presbyterian Women

As we focus on “Celebrating Sabbath” this year in our Miriam and Hannah Circles, and the April 22, 2023 Spring Gathering of the *Lake Michigan Presbyterian Women* here at FPC Holland, we deferred an Advent Luncheon to 2023. We did drop off a bundle of “foundation” garments for women and children fleeing domestic violence during Advent. They may need all the basics when they reach the welcoming arms of RESILIENCE, and new, clean items are such a blessing. We give thanks for this comforting way to help in our own community.

We received a lovely note of thanks from our own Presbyterian Preschool for our annual gift of \$1,000. PW will be able to do this at least 1-2 years more, since our Dutch-costumed service program during Tulip Time, Inc. that funded that giving, did not survive COVID. It sure was fun!

Some lovely women we want you to meet today! These 3 women, linked together like us, will grace our Christ Candle going forward.



We do contribute personally to memorial service luncheons with our time and cookies, but that is as individuals. Interested women – and men – are always welcome to participate at those tender and special times in our congregation.

Our monthly Bible study groups will continue throughout wintery times:

Miriam Circle will meet in person at FPC Holland on **January 11, February 8, and March 8** at 9:30 AM, weather permitting. If Holland Public Schools are closed, Circle will not meet.

Hannah Circle will meet only by ZOOM during the winter on 2<sup>nd</sup> Thursdays at 1:30 pm. The ZOOM link will be sent a day ahead of **January 12, February 9, and March 9**. This allows our snowbirds and homebound members to continue participation.

**GET THE LATEST NEWS** *from* **PRESBYTERIAN WOMEN**

We are adding more content on our Facebook page! // Facebook: **FPC Holland PW**

Online: [PresbyterianWomen.org](http://PresbyterianWomen.org)

# CONNECT TOGETHER

## Prayer Shawl Knitting/Crocheting Group

Are you interested in making prayer shawls and having a time of fellowship? We meet the third Monday of the month from 1-3pm in the Ontario room. Our next meeting is January 16. You are welcome to come a little late or leave early as needed. We will have a few 'kits' of yarn and patterns if you need one. Lion Brand Homespun yarn makes a very soft and cuddly shawl.

Any questions please contact Janet Haines:  
janethaines24@gmail.com  
or Sarah Anderson: andersons@hope.edu

**Hello Busy Parents** // We know you're busy, but we also know that you want to make time to become a better parent! Join us for a discussion group where we'll learn from Dr. Becky Kennedy's book *Good Inside* (@drbeckyatgoodinside).

Discussion led by Shanna and Paul Van Kempen.  
**Childcare provided** (it's almost like a date night!)  
**Thursdays from 6-7pm, Jan 26-Feb 23** at First Presbyterian Church  
Questions? Email paul@fpcholland.org

**Who are Presbyterians?** // Classes for anyone inquiring about membership here at First Presbyterian Church will be held in January. Please add your name to a list by calling the church office or emailing office@fpcholland.org or pastor@fpcholland.org. We will respond with more information soon.

## The Men's Book Club

The Men's Book Club will meet Monday, January 3rd discussing *The Spy and the Traitor* by Ben Macintyre

February 6th - *The Greatest Been Run Ever* by Donohue and Molloy

March 6th - *The First Wave* by Alex Kershaw

We meet in-person the first Monday of the month at 7pm in the Michigan room. If you have questions, please contact Larry Lynn at oldrun09@gmail.com or 616.617.8944.

## Women's Book Club

The Women's Book Club will meet Sunday, January 8th discussing - *The Sun Does Shine* by Anthony Ray Hinton

February 12th - *The Personal Librarian* by Marie Benedict

March 12th - *Hamnet* by Maggie O'Farrell

We meet in-person the second Sunday of the month at 1pm in the M&M Café. If you have questions, please contact Bev Plagenhoef at rbplagen@live.com



Knitting/crocheting group.

# Let's Pray Together

## IN SYMPATHY

Our heartfelt condolences to our custodian Jane Oosterhouse and husband Mike, and family whose son Joshua, passed away unexpectedly on December 2. Expressions of care may be sent to: Jane & Mike Oosterhouse, 20 E. 30<sup>th</sup> St., Holland, MI, 49423.

## FOR FPC

- Prayers of Thanksgiving for our many recent visitors
- For the joyous news of Pastor Cathy accepting the call to lead our congregation!
- For the health of our congregation as we worship indoors

## IN PRAYERS

- Mary Deenik recovering from surgery on her elbow after a fall
- Dean Effken is now out of the hospital and recovering at home
- Keith Hayes recovering at home
- Carol Knutson Molitor as she recovers from abdominal surgery in Punta Gorda, Florida
- Karen Salley is home from the Mayo Clinic following a successful surgery. She is cancer free and very thankful for all the prayers.
- Jen Laux-Ludwig that her multiple sclerosis goes back into remission soon
- Phil Sturdevant plans to move from Appledorn to a facility in Ludington, closer to his family
- Mickey Harris continues to recover at home following successful abdominal surgery to remove cancer
- Prayers for those who join us in worship online

- Those processing emotional pain
- Those struggling with addictions
- Those grieving with the loss of loved ones

## YOUTH@FIRST

Prayer of thanks for the youth that are engaged, interested, and asking great questions!

## HOSPICE CARE

- Eric and Megan Heller as Eric continues treatment under palliative care with hospice at home for cancer

## LONG-TERM CARE & ASSISTED LIVING

- Jim Smith - Royal Atrium Inn in Zeeland
- Roy & Meriem Elwell - Freedom Village
- Ralph Richardson - Freedom Village
- Connie Oppenhuizen - Royal Atrium Inn in Zeeland.
- Sara Brady - American House
- Bob and Jo Ann Martin - Riley's Grove in Zeeland
- JoAnn Karn - SKLD in Zeeland (Rm 204)
- Beau Bennett (son of Mary and Dick Bennett) - Appledorn Living Center South
- Wiley Wilson - Appledorn Living Center South
- Lois Rust - Appledorn Living Center South
- Marilyn Chamberlain - Resthaven Maple Woods

Prayer requests are shared in the **Member Area** on the church website: [www.fpcholland.org/member-log-in](http://www.fpcholland.org/member-log-in).

To maintain confidentiality, the Member Area, including the prayers, are password protected. The password is **Presby659**.

If you would like to submit a prayer request for publication on this list, please send it to [office@fpcholland.org](mailto:office@fpcholland.org).

If you would like to share a confidential prayer request, please contact:

Rev. Linda Male, Interim Pastor: [Linda@fpcholland.org](mailto:Linda@fpcholland.org)

Rev. Paul Van Kempen, Associate Pastor: [Paul@fpcholland.org](mailto:Paul@fpcholland.org)



*worshipping, serving, and living with a fresh  
vision of God's vibrant energy and grace for all..*