



presbyterian *profiles*

A PUBLICATION OF FIRST PRESBYTERIAN CHURCH / APRIL 2023

A Message from Rev. Cathy C. Hoop	2
A Message from Rev. Paul Van Kempen	3
Worship Center	4
Presbyterian Women	5
Outreach Clap Walk	6 & 7
Around FPC	8 & 9
Connect Together	10
FPC Prays	11

CHURCH STAFF

Deacons

deacons@fpcholland.org

Cathy Caldwell-Hoop

Senior Pastor and Head of Staff
cathy@fpcholland.org

Hannah Campau

Administrative Assistant
office@fpcholland.org

Marlene Field

Bookkeeper
Marlene@fpcholland.org

Lori Klinesteker

Clerk of Session &
Children's Ministry Leader
lori@fpcholland.org

Chuck Norris

Director of Music
charles@fpcholland.org

Jane Oosterhouse

Custodian
jane@fpcholland.org

Thom Samuelson

Maintenance
thom@fpcholland.org

Sue Stock

Publications Specialist
sue@fpcholland.org

Paul Van Kempen

Associate Pastor
paul@fpcholland.org



Rev. Cathy Caldwell-Hoop

Senior Pastor

Connections

I just returned from a quick trip back to Alabama to officiate at the wedding of one of my members there. (They had a cool front come through...and blamed me!) Before I left, one of the staff said to me that they hoped it would be a wonderful visit with good friends, but that they also wanted me to return to the expectation of deep and meaningful relationships here. What a lovely blessing.

Church can be such a mixed experience - for some it is a "second family," a "family of choice" or "extended family." For others, it is a support network, a community that travels alongside you through illness or sorrow or joy. And for still others, it is a sea of faces, and it can be easy to feel like the outsider in the crowd. It takes time to find your way, to find your place.

One of the comments I have heard frequently since arriving is the need to foster connections. COVID took its toll on the sense of community, but now we have the opportunity to rebuild, to reconnect.

Also, there are new faces appearing (which is such a great gift!) and we want to be as welcoming as possible to those who are wondering if this could be a good place for them to explore and nurture their faith.

We have a favor to ask. Would you take a moment to respond to the brief questions on the questionnaire located on the back cover of this newsletter? If you have children or youth in your family, we would love for them to respond as well.

Let's find out what makes us "tick." Let's discover where we have connections with one another. Let's open up space for meaningful dialogue as we invite the Spirit to fan the flames within us, renewing us for all we are called to do and be in this world.

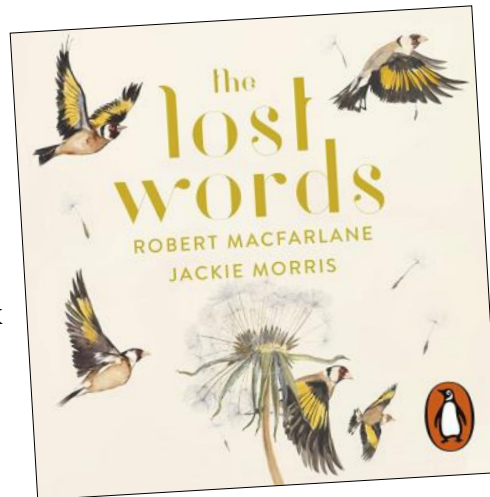
Blessings,
Pastor Cathy



Rev. Paul Van Kempen
Associate Pastor

Bridging the Gap

We have a birdfeeder that hangs just outside our kitchen window. As I do the dishes each morning and evening, I watch the birds come and go from the feeder. I love those birds, but I realized recently that I didn't even know what kinds of birds I was watching. I could identify the bright red of the cardinal, but only after doing some research have I started to recognize the House Finch and the Black Capped Chickadee. There are still lots of birds for me to meet. I don't think this is uncommon. As our connections to technology have increased, we have grown further away from understanding the natural world around us.



In response, Robert Macfarlane and Jackie Morris produced *The Lost Words*, a book that would give new life to 23 of the "lost words." Using poetry and beautiful art, their goal was to summon these words back into the lives of children and adults. It is a beautiful book that tries to bridge the gap between our ever-advancing technological world and our connection to the world of nature.

This summer at Peace Camp, we are hoping to help the kids re-connect with the natural world by caring for the planet. Our theme this year is *Big, Beautiful Planet* and we'll be thinking carefully about how caring for our planet leads to peace for individuals, personal relationships, and the world. It will be a valuable camp for our kids and for our community.

There is a beautiful book that tries to address this growing gap called *The Lost Words*. (If you were at the Easter Sunrise Service, you already heard me talk about it.) Some explanation: In 2015, a new edition of the Oxford Junior Dictionary, a book widely used in schools around the world was published. This book contains the most common words that school kids should know. Eagle-eyed observers of the new edition noticed that about 40 words concerning nature had been dropped. Things like *acorn*, *adder*, *bluebell*, *dandelion*, *fern*, *heron*, *kingfisher*, *newt*, and *willow*, had been removed from the children's dictionary and replaced with things like *attachment*, *blog*, *bullet-point*, *cut-and-paste*, and *voicemail*. This replacement of words from the natural world with words of the virtual world became a powerful sign of the growing gulf between children and nature.

If you haven't signed your kids up yet, I invite you to do so. If you'd like to volunteer, let me know.

Peace,
Pastor Paul





Lori Klinesteker
Children's
Ministry Leader

Worship Center: Keeping In Touch



Worship Center children

...Planted seeds deep into the soil...and waited.
...Buried the Alleluia...and waited.
...Placed Jesus into the tomb, rolled the
stone over the entry...and waited.

We Prepared, waited then rejoiced in the sprouting of flowers, the singing of Alleluia, and the Empty Tomb – the Risen Christ. Christ's Light has returned to the Worship Center.

Easter Sunday there were 28 children participating in the Easter egg hunt on the First Presbyterian Preschool playground. Children's excitement and parent participation was grand.

Alleluia Christ is Risen,
Christ is Risen Indeed!

~ Lori Klinesteker



Big Beautiful Planet // Peace Camp 2023

Peace Camp teaches strategies and tools for inner peace, relational peace, and global peace through lessons, games, songs, crafts and more!

WHEN: June 26-30, 9:00-11:45 each day
WHERE: First Presbyterian Church, Holland
(659 State St.)

WHO: Campers: Kids entering grades 1-6
Teen leaders: Teens entering grades 7-12



Presbyterian Women

Apparently we have the recent record for attendance at the annual Gathering of the Lake Michigan Presbyterian Women with 78 attending from here and other congregations, plus the wonderful Diane Hayes crew providing an abundant luncheon in Fellowship Hall. Our speaker was the author of this year's denominational Bible study on "Celebrating Sabbath" - The Rev. Dr. Carol Bechtel, professor of Old Testament at Western Seminary. She brought a rich study for PW since we began Lesson 1 last fall. Thanks goes to Mary Bennett and Bev Plagenhoef, and the Miriam Circle for all its leadership and planning for this event.

And, we thank Beth Magennis for playing piano for worship, and Steve Magennis for stepping in on the sound board. We heard from Sherry Martens about RESILIENCE, with more than \$1,000 in women's new undergarments, and Marina Tronhut about First Presbyterian Preschool - which received almost \$1300 in our offering that day.

Word is that there is a June gathering of our Circles for a catered picnic under discussion! Details to come!

~ Janet Magennis, PW Communications



GET THE LATEST NEWS *from* PRESBYTERIAN WOMEN

We are adding more content on our Facebook page! // Facebook: **FPCHollandPW**

Online: PresbyterianWomen.org

Outreach

Holland Hunger Awareness Weekend and Hunger Walk.

The weekend of May 20 & 21 has been designated Holland Hunger Awareness weekend. On Saturday, May 20 Holland residents are encouraged to participate in the Postal Food Drive by donating non perishable food items in the plastic bags provided. Then, on Sunday May 21, the Holland-Zeeland Area CROP Hunger Walk will be held at Centennial Park in downtown Holland from 1:00 to 3:00 pm. In addition, many of the local agencies who benefit from the walk will have booths available where they will share information about the wonderful work they do feeding people here in the Holland Zeeland area.



Please join with other First Presbyterian Church members as we walk to show solidarity with the millions around the world who walk mile to access food and water. If you can't walk, please consider coming down to the park to find out about local efforts to ensure enough for all or make a donation to one of our

First Pres walkers. You can also bring your food donations on Sunday to Centennial Park if you miss the Postal Food Drive.

To sign up to walk or donate, stop by the Outreach area after church on Sunday to get a walker envelope or get more information online at www.hollandhunger.org - follow the links to donate or join the First Pres team of walkers.



Crop Walk 2022



Outreach

Annual May Baskets Campaign

AT RESILIENCE, WE PROVIDE SERVICES TO SURVIVORS FROM DIVERSE GENDER AND ETHNIC BACKGROUNDS. WE KINDLY REQUEST DONATIONS OF A WIDE RANGE OF PRODUCTS, INCLUDING THOSE TAILORED FOR MEN, BIPOC INDIVIDUALS, AS WELL AS UNSCENTED AND ALLERGY-FRIENDLY OPTIONS.

WE NEED:

	CLEANING PRODUCTS	
Bath Towels	All-Purpose Cleaner	Spray Bottles
Bathroom Cleaner	Dusting Spray	Stain Remover
Dish Cloths	Fabric Softener	Toilet Cleaner
Dish Racks	Glass Cleaner	Toilet Brush
Dish Soap	Laundry Soap	Toilet Paper
Dishwasher Detergent	Mops/Brooms	Trash Bags
Laundry Baskets	Rubber Gloves	Plastic buckets
Paper Towels	Sponges	Plungers

	PERSONAL CARE	
Baby Lotion	Toothbrushes	Cotton Balls
Baby Shampoo	Toothpaste	Dental Floss
Baby wipes	Hair Care Products	Face Lotion
Body wash	Hand Lotion	Face Wash
Bug spray	Lip Care	First Aid Kits
Combs	Nail Care	Sunscreen
Shampoo	Razors	Tissues
Conditioner	Shave Cream	

RESILIENCE
ADVOCATES FOR ENDING VIOLENCE

Questions?
Sherry Martens
616-494-1747
SherryM@ResilienceMI.org

Donation Drop Off:
411 Butternut Dr., Holland MI 49424
Monday - Friday, 9AM - 5PM
Donations accepted through May.

Help us make spring a bit brighter with May Baskets!

We are looking for compassionate community members to **donate to our annual May Baskets program!** Poverty can often create additional barriers to



leaving an abusive relationship. While many survivors can receive public assistance such as WIC or SNAP, these programs do not allow the purchase of any taxable items. Each May, we gift laundry baskets filled with taxable everyday necessities to all of the families using our services.

Who does it benefit? Current survivors/families using Resilience services.

How does it work? We're collecting personal care/hygiene items and cleaning supplies to fill May Baskets. If you are able, we encourage you to drop off a few things. There will be a container for collection in the Meet and Mingle/Outreach Kiosk area labeled for May Baskets.

Questions? Contact Sherry Martens: martens.sherry@gmail.com

Flyer and photos courtesy of Resilience website.

Worship and Arts Council

On May 21, we will celebrate the gifts of time and talent of our faithful volunteers at church. If you have participated as a worship center leader, choir member, Meet & Mingle Cafe worker, usher, liturgist, greeter, sound/video operator, nursery volunteer, and/or involved with communion please take a plant home as a thank you. The plants will be set up just outside the sanctuary.

Connections Council

The Connections Council would like to thank all of the volunteers of both time and delicious food who helped make the Easter Breakfast a success once again!

Special thanks to Alan Martens, Diane Hayes, and Chris Urbanik for their help organizing a fun event!

<> Around FPC <>



Common Threads

The gathering formerly known as the knitting and crocheting group has a new name! We hope that "Common Threads" reflects the fact that all are welcome. Many of us are crocheting or knitting prayer shawls, but feel free to come and work on other needlework or crafts, or just for the fellowship!

We meet the third Monday of each month from 1-3 pm in the Ontario room. Come and go as you are able. We hope you'll join us!



On April 1, friends from FPC traveled by bus to St. Cecilia's in Grand Rapids to hear **Chuck Norris' GVSU Men's Coral Group** (and 3 other GVSU choirs) sing music written and directed by Andre Thomas. It was a wonderful time together and the music was delightful.

Care packages for college students from the Deacons.

<> Around FPC <>



Maundy Thursday Service and Meal

One: Christ's love is poured out for us
like water poured into a basin.

All: Christ's love washes us, setting us free.

One: Christ's love shows us who we are to be,
and what we are to do.

All: How blessed we are to know such love!



CONNECT TOGETHER

Men's Study Group

Meets every other Friday morning at 7:30am in the M&M Cafe. The next meeting will be **Friday, May 5** and then on **May 19**. Contact is David Ford.

Common Threads Group

The gathering formerly known as the knitting and crocheting group has a new name! We hope that "Common Threads" reflects the fact that all are welcome. Many of us are crocheting or knitting prayer shawls, but feel free to come and work on other needlework or crafts, or just for the fellowship!

We meet the third Monday of each month from 1-3 pm in the Ontario room. Come and go as you are able. We hope you'll join us!

Our next meeting is Monday, May 15.

Women's Book Club

The Women's book club will meet at 1pm on Sunday, May 14 to discuss the book: **Leonard and Hungry Paul** by Ronan Hession.

We meet in-person the second Sunday of the month at 1pm in the M&M Café. Questions? Please contact Bev Plagenhoef at rbplagen@live.com

The Men's Book Club

The Men's book club will meet at 7pm on Monday, May 1 to discuss the book: **Can We Talk About Israel? A Guide for the Curious, Confused, and Conflicted**

We meet in-person the first Monday of the month at 7pm in the Michigan room. Questions? Please contact Larry Lynn at oldrun09@gmail.com or 616.617.8944.

Why does Easter move around?? The "Movable Feast" of Easter

Someone dropped this question in the Question Jar: Why isn't Easter the *same* Sunday every year? One obvious challenge is that Easter is a *Sunday* (since that is the day of Jesus' resurrection), so we can't assign a specific date to it, as we do with Christmas. Life would be so much easier if Easter could at least be on the "second Sunday of April" or the "third Sunday of April," but it's not.... In 325 the Council of Nicea decreed that Easter would be the Sunday following the paschal (Passover) full moon, which is the full moon that falls on or after the spring equinox (March 21). Since the equinox can range from March 20 – March 22, the Catholic church determined March 21 would be the ecclesiastical equinox! While Passover and Easter do sometimes overlap, it is not always the case since the date for Passover is determined using the Jewish calendar. While, Easter's moveable date can be confusing, there is something wonderfully holy about the fact that Easter can never be tied to one moment on the calendar, but is always catching us by surprise!

Our church Directory is now on the FPC website!

Found on the password protected member area page; fpcholland.org/member-log-in.com



*worshipping, serving, and living with a fresh
vision of God's vibrant energy and grace for all.*



Please complete and bring to the church office, or look for blank forms in the M&M Cafe.

Let's Get to Know Each Other!
What makes you tick?

Name: _____

I could spend hours... _____

I dream about... _____

I am passionate about... _____

My hope for our faith community is... _____

One more thing about me I want you to know... _____

IF these questions don't apply to you, make up your own: _____
