



*Worshiping, serving, and living with a fresh vision of  
God's vibrant energy and grace for all.*

ORDER OF WORSHIP  
April 19, 2026 // 10am

**CENTERING WORDS:**

Christ is risen. He is no less risen on the road to Emmaus than he is anywhere else.  
So look for him. Listen for him. And when he lingers at your door, honoring your freedom,  
but yearning to feed you, say what he longs to hear: Stay with me.  
~ Debie Thomas, *Journey with Jesus*

**ENTERING GOD'S PRESENCE**

**PRELUDE**

**RINGING THE BELL & LIGHTING THE CHRIST CANDLE**

**GREETING**

One: The God of life be with you.

**All: And also with you!**

**GATHERING SONG** #596 *You are Holy*

Tim Staal

**\*CALL TO WORSHIP**

Terri Schamper

One: The risen Christ walks with us on the road.

**All: Even when we do not recognize him, he is near.**

One: He opens the Scriptures and breaks the bread.

**All: Our hearts burn within us as he speaks.**

One: Come, let us worship the one who makes himself known.

**All: We gather to hear his word and know his presence among us.**

**\*OPENING PRAYER**

**\*HYMN** #247 *Now the Green Blade Rises*

*\*Please stand if you are comfortable doing so.* \_\_\_\_\_

**PRAYER OF CONFESSION**

One: Risen Lord, You have walked out of the tomb,  
shattering the power of sin and death.  
Yet we confess that too often we still live  
as though the stone had never rolled away.

**All: Forgive us, Lord, and make us new.**

One: We cling to fear when You call us to faith.  
We hold on to resentment when You offer us peace.

**All: Forgive us, Lord, and make us new.**

One: We doubt Your presence when You stand beside us on the road.  
We are slow to recognize You in the breaking of bread.

**All: Forgive us, Lord, and make us new.**

One: We hesitate to share the good news that You are alive.  
We forget that Your resurrection changes everything.

**All: Forgive us, Lord, and make us new.**

One: Open our eyes to see You in our midst.  
Open our hearts to receive Your grace.  
Open our hands to serve in Your name.

**All: Risen Christ, live in us, that we may live for You. Amen.**

**ASSURANCE OF PARDON**

One: Friends, hear the good news: Christ is risen!  
In Him, we are forgiven, renewed, and sent to live as Easter people—  
people of hope, joy, and resurrection life.

**All: Thanks be to God! Alleluia!**

**\*PASSING THE PEACE**

One: The peace of Christ be with you.

**All: And also with you.**

**HEARING GOD'S WORD**

**TIME WITH CHILDREN**

*Halle, Halle, Halle*

**ANTHEM**

*On the Journey to Emmaus*

Marty Haugen

## PRAYER FOR ILLUMINATION

### SCRIPTURE READING Luke 24: 13 - 35

One: The Word of God for the People of God.

All: **Thanks be to God!**

### SERMON

*Resident Foreigner*

Rev. Cathy C. Hoop

### \*AFFIRMATION OF FAITH

Excerpt, A Brief Statement of Faith, 1983 (PC,USA)

All: **We trust in Jesus Christ, fully human, fully God.**

**Jesus proclaimed the reign of God:**

**preaching good news to the poor and release to the captives,**

**teaching by word and deed and blessing the children,**

**healing the sick and binding up the brokenhearted,**

**eating with outcasts, forgiving sinners,**

**and calling all to repent and believe the gospel.**

**Unjustly condemned for blasphemy and sedition,**

**Jesus was crucified, suffering the depths of human pain**

**and giving his life for the sins of the world.**

**God raised this Jesus from the dead,**

**vindicating his sinless life,**

**breaking the power of sin and evil,**

**delivering us from death to life eternal...**

**With believers in every time and place,**

**we rejoice that nothing in life or in death**

**can separate us from the love of God in Christ Jesus our Lord.**

\*HYMN #246 *Christ is Alive!*

## RESPONDING TO GOD'S GRACE

### LIFE AT FIRST

*Please take this time to sign the red Friendship Pad found on the pew near you. If you have a prayer request, you are invited to fill out a prayer card (found in the pew-backs) and put it in the offering plate. The ushers will deliver it to the pastors.*

### INVITATION TO THE OFFERING

OFFERTORY

\*DOXOLOGY #606

All: Praise God whose image we all bear.  
Praise Christ whose mercy we all share.  
Praise Spirit making justice grow.  
One God from whom all blessings flow. Amen.

\*PRAYER OF THANKSGIVING

All: Risen Christ,  
You meet us on the road and open our hearts to your presence.  
Bless these gifts and use them to bring hope, light, and joy to the world.  
May all we give bear witness to your resurrection. Amen.

PRAYERS OF THE PEOPLE AND THE LORD'S PRAYER

*Some choose to begin this prayer, "Our Creator," "Our Mother," or "Our Parent."*

All: Our Father who art in heaven, hallowed be Thy name.  
Thy kingdom come, Thy will be done, on earth as it is in heaven.  
Give us this day our daily bread;  
and forgive us our debts, as we forgive our debtors;  
and lead us not into temptation, but deliver us from evil.  
For Thine is the kingdom and the power and the glory forever. Amen.

\*HYMN #692 *Spirit, Open My Heart*

CARRYING GOD'S LOVE INTO THE WORLD

\*BENEDICTION

\*SENDING SONG #740 *Lead Me, Guide Me*

---

**Worship Leaders:** Rev. Cathy Hoop, Rev. Paul Van Kempen, Beth Magennis,  
FPC Choir, Rose Gifford, Terri Schamper, Tim Staal

**Thanks to:** Sound and Video Tim Richardson, Greeter and Ushers, Bus Drivers,  
M&M Café Providers, Kiki Lemen and Nursery Care Providers

---

## ANNOUNCEMENTS

**Presby What?** // Would you like to learn more about the Presbyterian Church (USA), or about First Presbyterian of Holland? Curious about membership at FPC? Join us Sunday mornings (4/19 - 5/3) at 11:15am - 12 noon in the Ontario room for an opportunity to learn about the history, theology and mission of the PC(USA) and FPC. Contact Cathy at [cathy@fpcholland.org](mailto:cathy@fpcholland.org).

**Rev. Doug Brouwer invites you to join him for:** Faith Speaking Into Crisis: What does the church say when it can no longer be silent? Join us Sunday mornings (4/19 - 5/3) at 11:15am - 12 noon in the Michigan room. Virtual option is also available.

The church does not confess its faith in a vacuum. The great Reformed confessions of the modern era were forged in moments of crisis — when the comfortable formulas of routine religion were no longer adequate, when the gospel itself was at stake — not unlike today. Each of the documents studied in this series was the church's answer to the question: What do we say in this moment?

Session 2) The Confession of 1967

Session 3) The Belhar Confession (1986)

Session 4) The Accra Confession (2004)



**Screens & Streaming Survey** // Over the past year, we've been learning how to use our new screens and streaming technology as tools for worship. Our hope is that they support participation, deepen engagement, and help us share worship more fully with those joining online. As with any new tool, we're still learning together. Your feedback will help us understand what has been meaningful, what may have felt distracting and how we can use this technology in ways that best support our shared worship life. Thank you for helping us grow in this together.

**Follow the QR code to take the survey, or find a paper copy outside the office.**

**Celebrating Our Graduates** // If you have a student graduating this spring and would like to celebrate that accomplishment with the church family, please let us know by emailing [paul@fpcholland.org](mailto:paul@fpcholland.org).

**Grief Support Group** // Our grief support group will meet on Wednesday, April 22 at 2:00pm in the Superior Room. We come together to listen to one another, to be present to one another, to be thankful for God's companionship and love. Contact Cathy if you have any questions. [Cathy@fpcholland.org](mailto:Cathy@fpcholland.org).

**Justice Reads** //Justice Reads Book Group is currently reading, *The Color of Compromise* by Jemar Tisby. Grab a copy and plan on joining the conversation on **Thursday, April 30th** at 7pm in the M&M Cafe. For more info, contact Jan Brashler or Cathy Hoop.

**Crop Hunger Walk** // Mark your calendars for Sunday, May 17 between 1:00 and 3:00PM at Centennial Park in Holland. This is Holland/Zeeland's 47th CROP Hunger Walk. The walk raises funds for Church World Service and local hunger agencies. That week-end is also the Postal Food Drive. The Walk and the Post Office's collection of food & toiletries helps our local agencies. Agencies will be at the walk to share information. Come and support them by walking. Or better yet, register online now at: [www.hollandhunger.org](http://www.hollandhunger.org) to start raising support. Start a walker team online and spread the word!

**Gilmore Car Museum Visit!** // Once again the First Presbyterian Men's Group is sponsoring a visit to the Gilmore Car Museum on **Wednesday, May 13th**. The feature display this year will be GM Motorama Marvels from the Joe Bortz Collection!

We'll meet at church at 8:00am and take the church bus to the museum (Thank you Jon Kreple!). Should be back to the church around 5:00pm. Admission for the day is \$20. Also bring money for lunch and \$10 for gas for the bus. This is open to anyone interested who wants to go, not just the Men's Group. There are 3 motorized carts available to rent for \$30(first come first serve) and 4 wheelchairs for those needing assistance.

There is a sign-up sheet in the Narthex. If you have any questions please contact Bob Gansen at (269)753-7024 or [robert.s.gansen@charter.net](mailto:robert.s.gansen@charter.net).

**Save the Date** // As you start making summer plans, consider joining us at Mystery Creek Campground for our paddle weekend, July 10-12. Come and camp or come for just the day - paddle or just hang out with us. It's a wonderful way to spend time outdoors growing friendships and having fun! Stay tuned for more details.



**Summer is just around the corner!** As you are planning your summer, make sure to **save the week of June 22-26** for Wild Wonder Camp at FPC! Wild Wonder Camp will be held June 22-26 from 9-11:45 each day. We welcome campers k-6th grade (entering in the fall) and teen helpers from 7-12th grade.

**Wild Wonder Camp is totally free!**

**Please use the QR Code register.**

We are looking forward to another great week where we learn how to care for creation! If you have any questions, don't hesitate to reach out!



## You Are Holy

*Eres santo*

Capo 5: (Am)

(Dm)

(G7)

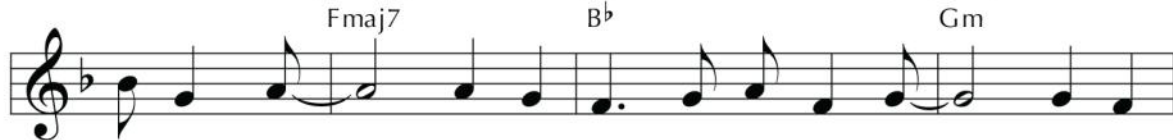


You are ho - ly, you are whole. You are al - ways  
*E - res san - to, e - res Dios por to - da la e -*

(Cmaj7)

(F)

(Dm)



ev - er more than we ev - er un - der - stand. You are  
*ter - ni - dad: siem - pre tú muy cer - ca es - tás de tu*

(Esus)

(E7)

(Am)

(Dm)



al - ways at hand. Bless - ed are you com - ing near.  
*pue - blo, buen Se - ñor. Te a - la - ba - mos hoy a - quí,*

(G7)

(Cmaj7)

(F)



Bless - ed are you com - ing here to your church in  
*te a - do - ra - mos con fer - vor. A tu i - gle - sia en*

(Dm)

(E7)

(Am)



wine and bread, raised from soil, raised from dead.  
*vi - no y pan nue - va vi - da así le das.*

## You Are Holy

(Am) (Dm) (G7) (Cmaj7)  
 Dm Gm C7 Fmaj7

You are ho - ly, you are whole - ness; you are  
*E - res san - to, e - res Di - os. Te sen -*

(F) (Dm) (Esus) (E7)  
 Bb Gm Asus A7

pres - ent. Let the cos - mos praise you, Lord! Sing ho -  
*ti - mos. La cre - a - ción te dé loor. ¡Di ho -*

(Am) (Dm) (G7) (Cmaj7)  
 Dm Gm C7 Fmaj7

san - na in the high - est! Sing ho -  
*san - na en el cie - lo! ¡Di ho -*

(F) (Dm) (E7) (Am)  
 Bb Gm A7 Dm

san - na! Sing ho - san - na to our God!  
*san - na! ¡Di ho - san - na al Se - ñor!*

# 247 Now the Green Blade Rises



1 Now the green blade ris - es from the bur - ied grain,  
 2 In the grave they laid him, love by ha - tred slain,  
 3 Forth he came at Eas - ter like the ris - en grain,  
 4 When our hearts are win - try, griev - ing, or in pain,



wheat that in dark earth man - y days has lain;  
 think - ing that he would nev - er wake a - gain,  
 he that for three days in the grave had lain;  
 your touch can call us back to life a - gain;



love lives a - gain, that with the dead has been;  
 laid in the earth like grain that sleeps un - seen;  
 raised from the dead, my liv - ing Lord is seen;  
 fields of our hearts that dead and bare have been:



love is come a - gain like wheat a - ris - ing green.



# Christ Is Alive!

246



1 Christ is a - live! Let Chris - tians sing. The cross stands  
 2 Christ is a - live! No lon - ger bound to dis - tant  
 3 In ev - ery in - sult, rift, and war where col - or,  
 4 Wom - en and men, in age and youth, can feel the  
 5 Christ is a - live, and comes to bring good news to



emp - ty to the sky. Let streets and homes with  
 years in Pal - es - tine, but sav - ing, heal - ing,  
 scorn, or wealth di - vide, Christ suf - fers still, yet  
 Spir - it, hear the call, and find the way, the  
 this and ev - ery age, till earth and sky and



prais - es ring. Love, drowned in death, shall nev - er die.  
 here and now, and touch - ing ev - ery place and time.  
 loves the more, and lives, where e - ven hope has died.  
 life, the truth, re - vealed in Je - sus, freed for all.  
 o - cean ring with joy, with jus - tice, love, and praise.



## Spirit, Open My Heart

Capo 3: (D) (G) (D) (G) (A7)  
F B<sup>b</sup> F B<sup>b</sup> C7

*Refrain*



Spir - it, o - pen my heart to the joy and pain of

(Bm) (D/A) (G) (A7) (Bm) (D/A) (Em)  
Dm F/C B<sup>b</sup> C7 Dm F/C Gm



liv - ing. As you love may I love, in re - ceiv - ing

(D) (G) (Em7) (D) (G) (D)  
F B<sup>b</sup> Gm7 F B<sup>b</sup> F



and in giv - ing. Spir - it, o - pen my heart. *Fine*

(D) (G) (D) (G)  
F B<sup>b</sup> F B<sup>b</sup>



1 God, re - place my ston - y heart with a heart that's  
2 Write your love up - on my heart as my law, my  
3 May I weep with those who weep; share the joy of

(A7) (Bm) (D/A) (G) (A7)  
C7 Dm F/C B<sup>b</sup> C7



kind and ten - der. All my cold - ness and  
goal, my sto - ry. In each thought, word, and  
sis - ter, broth - er. In the wel - come of

(Bm) (Em7) (D) (G2) (G)  
Dm Gm7 F B<sup>b</sup>2 B<sup>b</sup>



to Refrain

fear to your grace I now sur - ren - der.  
deed, may my liv - ing bring you glo - ry.  
Christ, may we wel - come one an - oth - er.

## 740

## Lead Me, Guide Me

Capo 1: (D)

*Refrain* (A7) (Em)

E<sup>b</sup> B<sup>b</sup>7 Fm

Lead me, guide me, a - long the way, for if you

(A) (D) (A7) (D)

B<sup>b</sup> E<sup>b</sup> B<sup>b</sup>7 E<sup>b</sup>

lead me, I can - not stray. Lord, let me walk each

(A7) (B7) (Em) (D) (A7) (D)

B<sup>b</sup>7 C7 Fm E<sup>b</sup> B<sup>b</sup>7 E<sup>b</sup> *Fine*

day with thee. Lead me, O Lord, lead me.

(D) (B7) (Em) (A7) (Em)

E<sup>b</sup> C7 Fm B<sup>b</sup>7 Fm

I am weak and I need your strength and power to help me

(A) (D) (D) (D7)

B<sup>b</sup> E<sup>b</sup> E<sup>b</sup> E<sup>b</sup>7

o - ver my weak - est hour. Help me through the dark-ness your

(Em) (D) (A7) (D)

Fm E<sup>b</sup> B<sup>b</sup>7 E<sup>b</sup> *to Refrain*

face to see. Lead me, O Lord, lead me.

The image shows a musical score for the hymn 'Lead Me, Guide Me'. It is written in G minor (three flats) and 3/4 time. The score is divided into several systems, each with a treble clef staff and a line of lyrics below it. Above the staff, guitar chords are indicated in parentheses, such as (D), (A7), (Em), (Bb7), (C7), and (Ebm). The score includes a 'Refrain' section and ends with a 'Fine' marking. There are also '3' markings above some notes, indicating triplets. The lyrics are: 'Lead me, guide me, a - long the way, for if you lead me, I can - not stray. Lord, let me walk each day with thee. Lead me, O Lord, lead me. I am weak and I need your strength and power to help me o - ver my weak - est hour. Help me through the dark-ness your face to see. Lead me, O Lord, lead me.'

# STAFF

Cathy Caldwell-Hoop  
Paul Van Kempen

Lori Lepard  
Marlene Field  
Lori Klinesteker

Jane Oosterhouse  
Thom Samuelson  
Sue Stock

Senior Pastor and Head of Staff  
Associate Pastor and  
Director of Music  
Administrative Assistant  
Bookkeeper  
Clerk of Session &  
Children's Ministry Leader  
Custodian  
Maintenance  
Communications

Cathy@fpcholland.org  
Paul@fpcholland.org  
Office@fpcholland.org  
Marlene@fpcholland.org  
Lori@fpcholland.org  
Jane@fpcholland.org  
Thom@fpcholland.org  
Sue@fpcholland.org

## DEACONS:

**Class of 2027:** Kristin Goddard, Lloyd Helder,  
Michele Richardson, Leah Wallar

**Class of 2028:** Cathy Colten, Gail Hering,  
Fred Mc Conkey

**Class of 2029:** Carleen Bauer, Marti Disler,  
Mark Van Oostenburg

## ELDERS:

**Class of 2026:** Luke Rund-Scott (Youth)

**Class of 2027:** Jen Laux Ludwig, Tom Salley,  
Tim Staal

**Class of 2028:** Jon Kreple, Lauren Stouffer,  
Chris Urbaniak

**Class of 2029:** Alana Cocanour, Paula Perkins

### **Children's Programming During Worship:**

Children of all ages are encouraged and welcome to be with us during worship. If you prefer an alternative:

- Nursery: Newborn - 3 years of age. Available for the whole service.
- Celebration Time - 4 years of age through 1st grade. Available after Children's Time.

### **Education Offerings After Worship:**

Education hour is from 11:15a -12:00p. *All are welcome to participate!*

- Adult Class - Michigan Room
- Youth - Youth Room
- Worship Center - PreK - 5th grade
- Nursery - Newborn through 3 years

## **FIRST PRESBYTERIAN CHURCH**

659 State St., Holland, Michigan 49423 / Office: (616) 392-9022 / Email: [office@fpcholland.org](mailto:office@fpcholland.org)



FPC is a More Light congregation, celebrating the full inclusion of LGBTQIA+ individuals in life, ministry and witness of the PC (USA) and in society. You are welcome here, and you are loved. Learn more at [MLP.org](http://MLP.org)